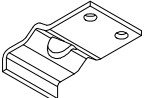
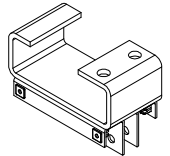


**TOP PIN - BEARING PLATE ASSEMBLY**  
 ZINC PART # : 150-118-2  
 SS PART # : 150-118SS-2  
 QTY: \_\_\_\_\_



**BEARING PLATE**  
 ZINC PART # : 100-50  
 SS PART # : 100-50SS  
 QTY: \_\_\_\_\_



**TOP POD ASSEMBLY**  
 ZINC PART # : 150-133  
 SS PART # : 150-133SS  
 QTY: \_\_\_\_\_



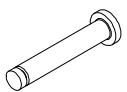
**ROLLER**  
 PART # : 170-60  
 QTY (2 PER DOOR): \_\_\_\_\_



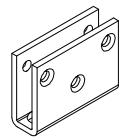
**KLIPRING**  
 PART # : 170-28  
 QTY: \_\_\_\_\_

COMMON SIZE WINDOWS	CLEAR ACRYLIC WINDOW	GASKET #	QTY.
9" X 14"	100-1459	170-44-11	
14" X 16"	100-1460	170-44-23	
15" X 20"	100-1461	170-44-25	
10" ROUND	100-1452	170-44-17	
SPECIFY OTHER WINDOWS			QTY.
SIZE:		MATERIAL:	
*STYLE:			
OTHER NOTES:			

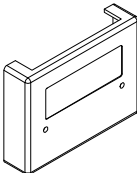
\* STYLE INDICATES THE METHOD USED TO ATTACH THE WINDOW.  
 EXAMPLE: GASKET, FRAME, ETC.



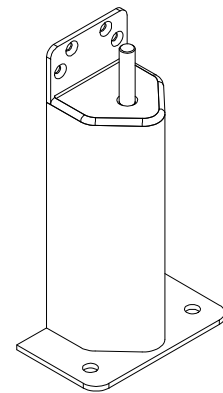
**AXLE**  
 PART # : 170-58  
 QTY: \_\_\_\_\_



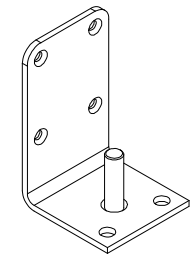
**BOTTOM LEAF**  
 ZINC PART # : 100-609  
 SS PART # : 100-609SS  
 QTY: \_\_\_\_\_



**COVER**  
 ABS PART # : 170-18208-3  
 QTY: \_\_\_\_\_



**3" X 9" JAMB GUARD**  
 ZINC PART # : 150-75-2  
 SS PART # : 150-82SS-1  
 QTY: \_\_\_\_\_



**BOTTOM PIN**  
 ZINC PART # : 150-54  
 SS PART # : 150-54SS  
 QTY: \_\_\_\_\_

<b>PE-500 PART REPLACEMENTS</b>				
<b>SCALE:</b> N/A	<b>MATERIAL:</b> N/A			<b>ITEM NUMBER:</b> N/A
<b>REV #:</b> 0	<b>DWG BY:</b> BARCLAY	<b>DATE:</b> 2-24-2016	<b>ECN:</b> N/A	