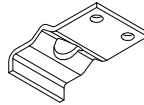


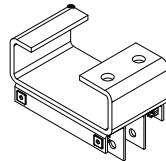
**TOP PIN - BEARING  
PLATE ASSEMBLY**

ZINC PART # : 150-118-2  
 SS PART # : 150-118SS-2  
 QTY: \_\_\_\_\_



**BEARING PLATE**

ZINC PART # : 100-50  
 SS PART # : 100-50SS  
 QTY: \_\_\_\_\_



**TOP POD ASSEMBLY**

ZINC PART # : 150-113  
 SS PART # : 150-113SS  
 QTY: \_\_\_\_\_



**ROLLER**

PART # : 170-60  
 QTY (2 PER DOOR): \_\_\_\_\_

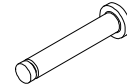


**KLIPRING**

PART # : 170-28  
 QTY: \_\_\_\_\_

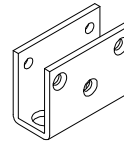
COMMON SIZE WINDOWS		CLEAR ACRYLIC WINDOW	GASKET #	QTY.
9" X 14"		100-1459	170-36-11	
14" X 16"		100-1460	170-36-23	
9" X 30"		100-1438	170-36-13	
10" ROUND		100-1452	170-36-17	
SPECIFY OTHER WINDOWS				QTY.
SIZE:		MATERIAL:		
*STYLE:				
OTHER NOTES:				

\* STYLE INDICATES THE METHOD USED TO ATTACH THE WINDOW.  
 EXAMPLE: GASKET, FRAME, ETC.



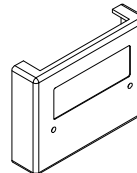
**AXLE**

PART # : 170-58  
 QTY: \_\_\_\_\_



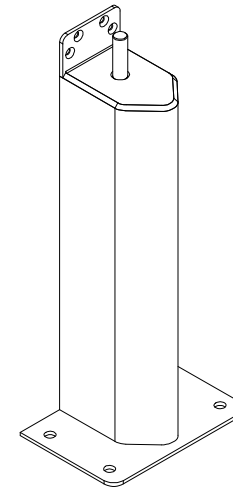
**BOTTOM LEAF**

ZINC PART # : 100-608  
 SS PART # : 100-608SS  
 QTY: \_\_\_\_\_



**COVER**

PART # : 170-18208-3  
 QTY (2 PER DOOR): \_\_\_\_\_

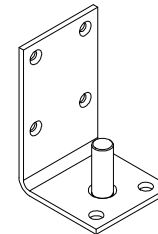


**3" X 9" JAMB GUARD**

ZINC PART # : 150-76-2  
 SS PART # : 150-80SS-1  
 QTY: \_\_\_\_\_

**5" X 18" JAMB GUARD**

ZINC PART # : 150-79-2  
 SS PART # : 150-81SS-1  
 QTY: \_\_\_\_\_



**BOTTOM PIN**

ZINC PART # : 150-47  
 SS PART # : 150-47SS  
 QTY: \_\_\_\_\_

<b>P11 PLUS PART REPLACEMENTS</b>				
<b>SCALE:</b> N/A	<b>MATERIAL:</b> N/A			<b>ITEM NUMBER:</b> N/A
<b>REV #:</b> 0	<b>DWG BY:</b> BARCLAY	<b>DATE:</b> 2-17-2016	<b>ECN:</b> N/A	