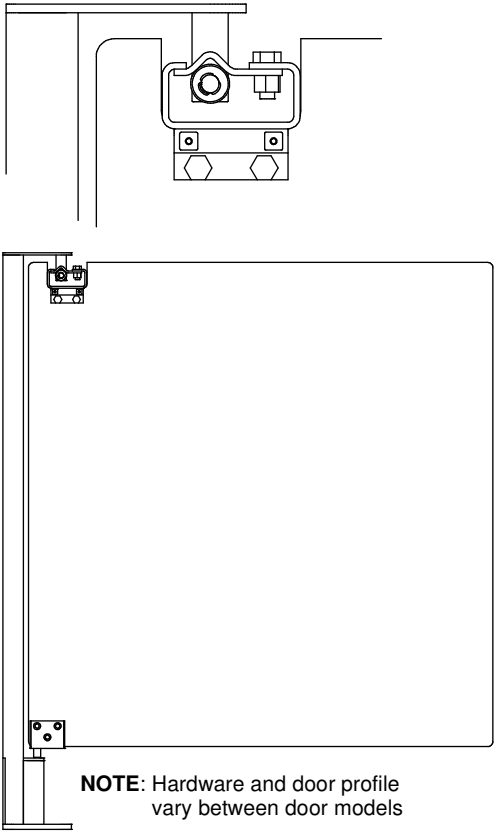


# INSTALLATION INSTRUCTIONS & PART DIAGRAM

## Eliason® *Easy Swing*® Double Action Doors

### Free Standing Gate Post



1. Measure height of post (dimension A) and compare with dimensions given at time of ordering.
2. Place post in desired location and drill a 3/8" hole 3-1/2" deep to allow the thread tapping dust to settle and then blow clean using compressed air.
3. Insert the 3/8" x 3" anchor bolt through hole in the base of the post and into the drilled hole. Using a 9/16" wrench, tighten the anchor into the base until the hex washer head makes contact.
4. Repeat steps 2 & 3 until all four anchors are secure to the base of the post.
5. Measure width and height of framed opening and compare with dimensions given at time of ordering. (This model was cut to the dimensions given by the customer and is not adaptable to fit into a different size opening.)
6. Slip door over bottom pin and lift slightly to slide door pod over bearing plate. Line up holes and insert bolts supplied. Partially install lock nuts, move door to closed position and secure lock nuts.
7. Install covers and secure four 1/2" screws supplied per door.

#### 150-1000-1 - Gate Post Assembly

150-1000 - Free Standing Gate Post, black with drop in pin cut to size

100-874 - Bearing Plate with (2) 5/16 - 18 screws, (2) 5/16 - 18 lock nuts

170-31 - 3/8" Axle

170-30 - (2) Rollers

170-28 - (2) Kliprings

100-900/901(LH/RH) - (2) Aluminum Covers, (4) screws (LWP-CAFE)

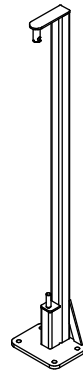
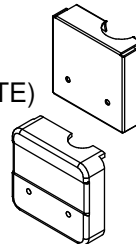
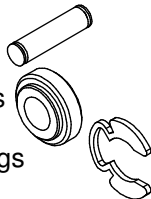
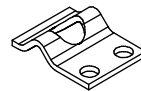
OR

100-898/899SS(LH/RH) - (2) SS Covers, (4) screws (SCP-CAFE, PMP GATE)

OR

170-18808 (LH/RH) - (2) Black ABS Covers, (4) screws (P11-PLUS GATE)

170-02992 - (4) 3/8" X 3" Floor Anchor



**ELIASON**  
CORPORATION

www.eliasoncorp.com  
9229 Shaver Road, Kalamazoo, MI 49003  
Telephone: 269-327-7003 / 800-828-3655  
Fax: 269-327-7006 / 800-828-3577  
E-mail: doors@eliasoncorp.com