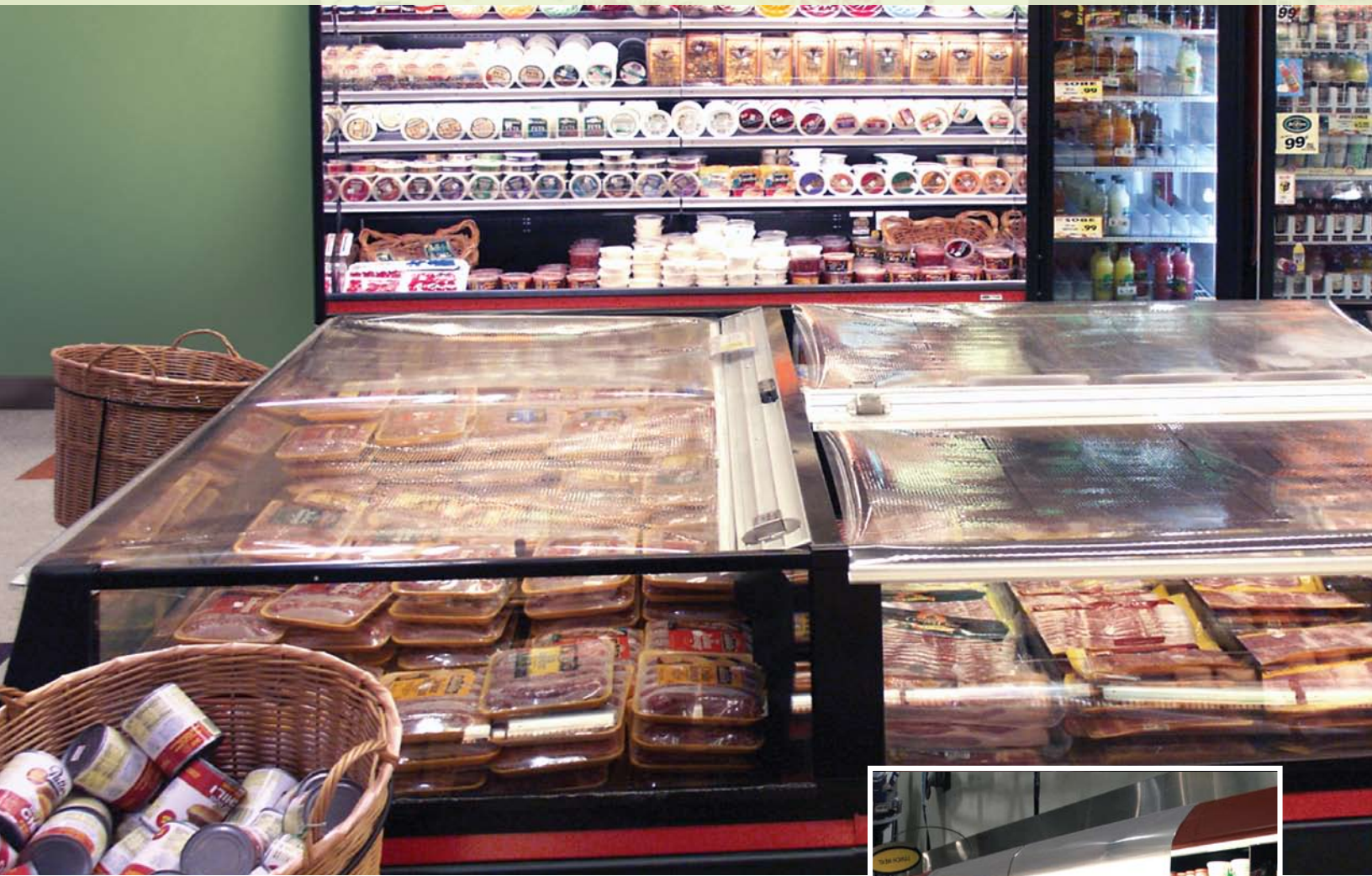


Eliason® Econo Cover®



Energy Saving Night Covers

- Proven in independent testing to be more effective than woven aluminum covers.
- Reduce energy costs and increase product shelf life.
- **NEW!** Magnetic hold down feature.
- Quick and easy installation. Excellent ROI payback.
- Helps maintain case and product temperature during emergency power outages.
- Great for restaurants, grocery stores, convenience stores.



ELIASON®

Over 50 Years Strong • www.eliasoncorp.com / www.econocover.com • (800) 828-3655

CORPORATE HEADQUARTERS 9229 SHAVER ROAD, KALAMAZOO, MI 49024 • FAX (800) 828-3577

Strip Doors & EZ Hang Hardware

Strip Doors

APPLICATIONS: Eliason SR 4000 Strip Doors are designed for commercial, industrial, institutional, retail and cold storage environments where a high visibility, low-cost barrier is preferred. Strip doors are suitable for pedestrian, cart, pallet jack and man-ridden vehicle traffic.

LIMITATIONS: Not recommended where heavy wind or excessive air pressure is present.



EZ HANG HARDWARE

- Easiest system on the market
- 75% faster initial installation time
- 90% faster strip replacement time
- Door strips simply push into place
- No nuts, bolts or washers
- Fits all Eliason strip doors

EZ HANG HARDWARE

- HTP Exclusive cross-linked polymer technology
- Also available in aluminum or stainless steel

DOOR MODELS

- Model SR 4001: Face of wall mount
- Model SR 4003: Swing mount
- Model SR 4002: Under lintel mount
- Model SR 4004: Sliding mount

OPTIONS & COLORS: Eliason also offers orange or red safety edge strips, custom strip door configurations, as well as full roll strip material in a variety of colors, widths and thicknesses.



WARRANTY: Eliason SR 4000 series strip doors carry a one year warranty against defects in material or workmanship.



INSTALLATION & MAINTENANCE: Eliason Series 4000 Strip Doors are conveniently packaged and very easy to install because there are no fasteners required to attach the strips to the EZ Hang Hardware. Strip doors can be cleaned using a strong industrial soap or detergent.

